

ht premium homes

LIVE THE HIGH LIFE

Premium realty news and promotional features

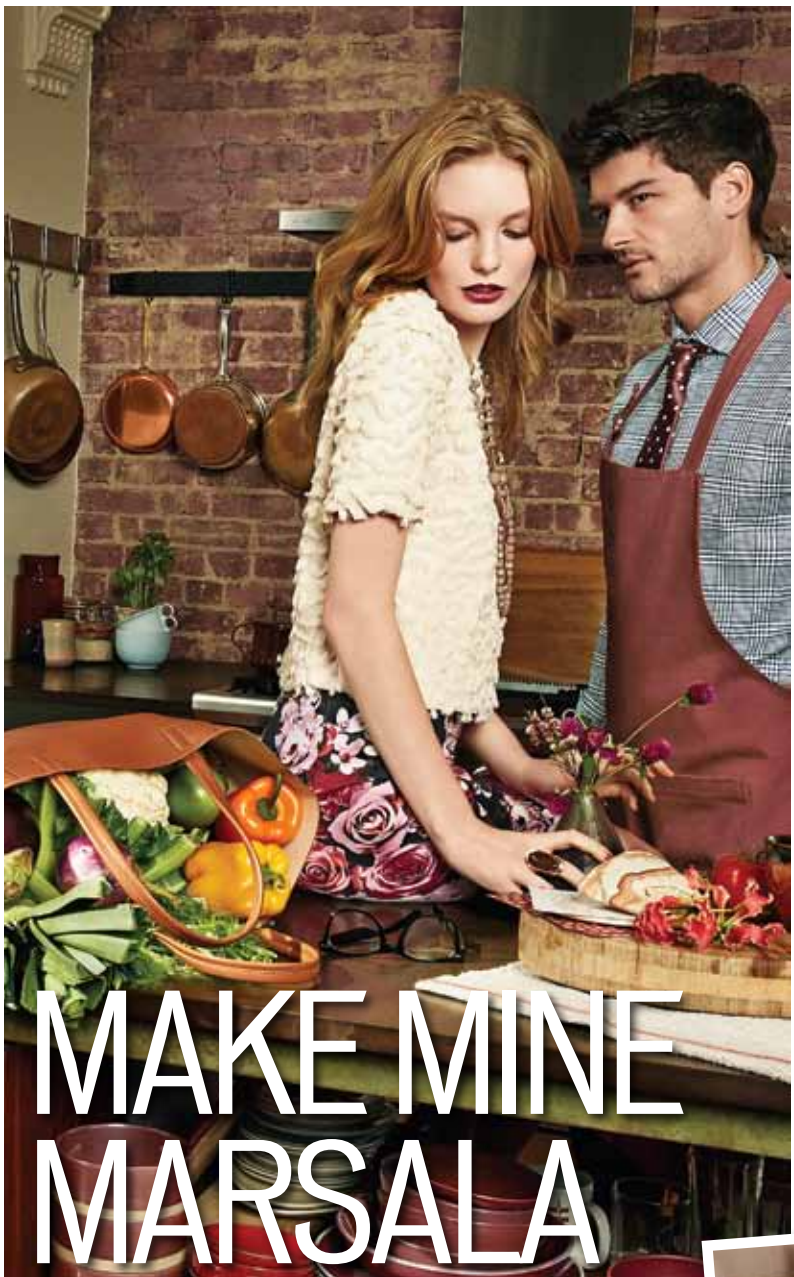


PHOTO: PANTONE



PHOTO: TONY CHI



PHOTO: SUNITA KOHLI



PHOTO: POTTERY BARN

MAKE MINE MARSALA

Wine red tones will rule in 2015, a year that will usher in the marriage of opposites, the bold and the understated. The focus will be on raw and rustic finishes and 'oneness with nature'

It's all about starting with a spanking new collection for your home in 2015. If 2014 was ruled by minimalism and de-cluttered space, getting the natural look seems to be all-important for 2015. Materials such as stone, wood or finishes will tend to get more rustic and raw. In furniture and furnishings, blue will be the new black. A shade of blue that tends to come closer to black is getting to be the rage. However, for accent pieces, accessories and paint, it is Marsala that will rule the global interior market. "Marsala is a subtly seductive shade, that draws us in to its embracing warmth," says Leatrice Eiseman, executive director, Pantone Colour Institute - "A naturally robust

Clockwise from left Marsala - Pantone colour of Year 2015 Grand Residence at Grand Hyatt Taipei: Tony Chi Country cottage with iconic Italian Corona Chair, Kaligath paintings: Sunita Kohli

Pantone Marsala Duvet Blue is the new black, Minotti



PHOTO: MINOTTI

and earthy wine red, marsala is a natural fit for the kitchen and dining room - making it ideal for tabletop, small appliances and linen throughout the home."

The use of heavy metal in juxtaposition with natural materials is becoming popular.

The year 2015 will be about creating contrasts in an unexpected way - say pairing a metallic rug with a beige tiled floor or copper throw pillows or a bold light pendant in an otherwise understated dining area.

Collections will be the hallmark of design trends in 2015. "Life is a collection of experiences, memories and relationships and people are taking an interest in collecting personal objects that reflect these personal experiences," says Tony Chi, who has done projects such as Park Hyatt Shanghai, Andaz 5th Avenue, New York, and was inducted into the prestigious Hall of Fame. "Collections in art, furniture and accessories are becoming more significant in this growing personal expression in one's home," he adds. Exquisite statues, archetypal

furniture such as iconic Italian Corona Chair, heritage paintings that reflect a certain culture and ethos are significant elements in modern luxury homes, says leading designer Sunita Kohli, who has restored and decorated the likes of Rashtrapati Bhavan, Parliament House Colonnade, the Prime Minister's Office and Hyderabad House in New Delhi, amongst other prestigious projects.

Green walls and indoor water features and nature-inspired decoration patterns will rule 2015. The emphasis on nature and on creating an 'inside outside' living space, one that embraces the natural beauty is set to become important. Tarun Tahiliani, well-known fashion designer who works on select luxury residences captures the gist of a modern luxury residence. "In one of my current projects in Goa, the entire essence is to have each room open to unobstructed view of greenery where a trickle of water soothes the senses. The idea being to live in an 'inside outside' harmony, birdsong, cross zephyrs, under the stars." ♦



Make a fresh start

What do your resolutions for this year include? Those planning to make changes at home are lucky because we're helping you with makeovers, bringing you a selection of our favourite design trends for the year 2015. The last word, however, will always be yours. "Clients in this market often lead busy, complex lives. They need great living spaces, quality and simplicity," says Chris Connell, partner, Foster Associates, adding. "We believe in leaving scope for personal touches." Plus, take a look at what's trending

Inside...



Artistic home
Shovana Narayan:
Collections of love

02



Past recollections
Amir Raza Husain's home
is an ode to antiquity

04

Living with light
Candlestands, coffee
tables, quilts

07

Galaxy (news & views)
HNIs look at India,
Waugh bats for realty

08

ht premium homes | TRACKER

LUXURY HOTSPOTS OF THE YEAR

Which cities will hold promise and potential for luxury launches in 2015? After talking to top developers, the list we have drawn up includes India's political and financial capitals and also the IT cities of Pune, Bengaluru and Gurgaon

COMPILED BY DTZ RESEARCH

CITY	PUNE
BEST KNOWN AS	Education & IT hub
ECONOMIC DRIVER	AUTOMOBILE, CORPORATE, IT
CITY CULTURE	LIVE WIRE, YOUNG MODERN CITY, SAFE HAVEN, GREAT WEATHER
WHAT DEFINES LUXURY PROPERTY	SWANKY AMENITIES, WORLD CLASS SPECIFICATIONS, HOME AUTOMATION
TRADITIONAL LUXURY LOCATION	Boat Club Road, Koregaon Park
NEW LUXURY LOCATION	Baner, NIBM Road, Bhosle Nagar, Kalyani Nagar, Magarpatta
LUX DEVELOPERS	Panchshil, Marvel Realtors, Rohan, VTP Builders
LUXURY PROPERTY AVG PRICE	₹14,000/sq ft ₹20,000/sq ft
LUXURY PROJECTS	Trump Towers, YOO Pune, Waterfront, Castle Royale, Renaissance

CHENNAI
Detroit of India, Port City
MANUFACTURING, SHIPPING, PORT, IMPORT & EXPORT
CULTURALLY VIBRANT WITH TRADITIONAL ART, MUSIC, DANCE
PRIME LOCATION, LARGE UNITS, SEA FACING INDEPENDENT PROPERTY
Boat Club, Poes Garden, Alwarpet, Adyar, Besant Nagar, Anna Nagar
Nungambakkam, Rutland Gate, Khader N Khan Road, CIT colony
Ceebros, Chaitanya, Vijayshanthi, Vishranthi, TVH
₹18,000/sq ft ₹22,000/sq ft
Patio Apartments, Laurels, Ceebros Grayshott, Real Value Lord's, Ceebros Atlantic, DLF Commander's Court, 57 Poes, Kalpataru Newcrest

GURGAON
Millennium City
CORPORATES, IT & ITES SECTOR
CORPORATE CULTURE WITH EDUCATED PROFESSIONALS
GATED COMMUNITIES, TOP-OF-THE-LINE LIFESTYLE AMENITIES
Central Gurgaon
Golf Course Road
DLF, Vatika, Raheja, ATS, Emaar MGF
₹7,500/sq ft ₹30,000/sq ft
DLF Aralias, DLF Magnolias, Veranda, Catrona by Ambience Developers

BENGALURU
Silicon Valley of India
CORPORATES, IT & ITES SECTOR
ENERGETIC & COSMOPOLITAN
PROXIMITY TO CBD, HIGH-END SPECIFICATIONS
Central locations Kasturba Road, Vittal Mallya Road, Lavelle Road
Hebbal, Whitefield, Nandidurg Rd, Palace Road, Golf Course Rd
Prestige, Brigade, Embassy, Total Environment,
₹15,000/sq ft ₹30,000/sq ft
Prestige Kingfisher Towers, Total Environment Van Gogh's Garden, Embassy City View, Mantri Altius, Brigade Crescent, Nitesh Park Avenue

DELHI
Capital & political centre
CORPORATES, MANUFACTURING, TRADERS, GOVT SECTOR
DOMINATED BY NORTH INDIANS WHO 'LIVE LIFE KINGSIZE'
PALATIAL HOUSES WITH SPRAWLING LAWNS
Central Delhi- Aurangzeb Road
South Delhi-Vasant Vihar, Shanti Niketan, Westend
Pvt Floors (Uppal, Salcon) DLF, Tata
₹15,000/sq ft ₹65,000/sq ft
DLF Capital Greens, DLF King's Court, Queen's Court, Marble Arch, Tata Apartments

MUMBAI
Financial-entertainment hub
FILM, DIAMOND, FINANCIAL SECTORS
COSMOPOLITAN, FAMOUS AS THE 'CITY THAT NEVER SLEEPS'
VIEW OF THE SEA, SPACIOUSNESS, GREENERY, LIFESTYLE FEATURES
Cuffe Parade, Marine Drive, Pedder Road
Prabhadevi, Lower Parel and Bandra Kurla Complex
Lodha Group, Oberoi Realty
₹25,000/sq ft ₹110,000/sq ft
Trump Tower, Lodha One, Oberoi Woods, Raheja Vivarea Mahalaxmi, Signature Island BKC, Praneta in Juhu